

STEEL SPORT



Steel Sport series is a traditional and robust design armature family for various sports facilities.

Innovative connection makes it easy to install and service in the future. For different installation purposes and projects, Steel Sport luminaires have various options of holders to meet the specifics of every type of Arena. Every armature is equipped with mechanical protection net.

Steel Sport is delivered with 4000 kelvin LEDs and DALI driver as a standard. 3000 kelvin and 5000 kelvin LEDs are optional.



STEEL SPORT



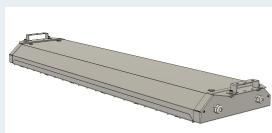
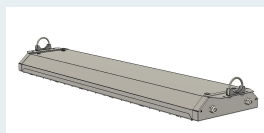
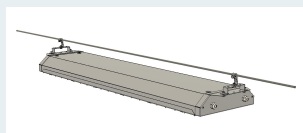
Luminous flux	11 000* / 22 100lm*
Correlated color temperature	4000K (K3000, K5000 and K6000 - optional)
Consumption	80* / 160W*
Light source	Integral LED module
Optics	Symmetrical and asymmetrical options available
Housing	Steel plate
Coating	RAL 9010 (pure white), other RAL - optional
Cover	Ball secure net
Electrical	Class I
Input voltage	230VAC/50 Hz
Protection class	IP20; IK10
Dimming	DALI as standard
External cable	Supplied as optional according to project specification
Installation bracket	Ceiling, Wire, Tube (adjustable angle), Wall (45°angle)
Lifetime	L80 70 000 hours (Ta 25°C)
Operating temperature	-10°C to 50°C
Standard Dimensions	S - 85x189x1310 / L - 87x326x1305
Certificates	CE, Ball Test

* - Tolerance +/- 7%

STEEL SPORT S



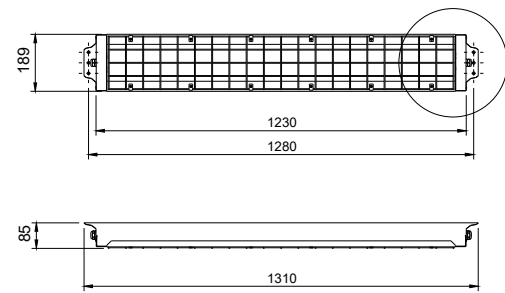
STEEL SPORT L



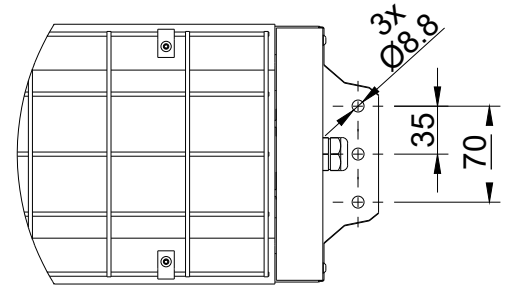
STEEL SPORT

Name	Luminous flux netto (lm)	Power (W)	Efficacy (lm/W)	Standard CCT (K)
STEEL SPORT S	11 000	80	138	4000
STEEL SPORT L	22 100	160	138	4000

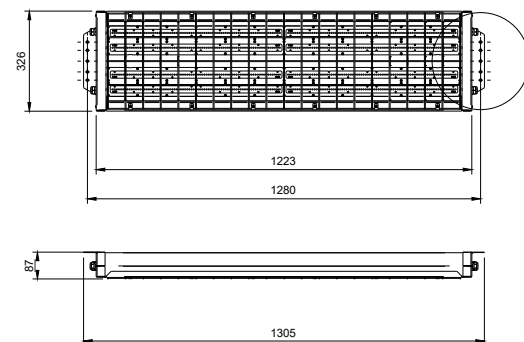
STEEL SPORT S



A (1:4)



STEEL SPORT L



A (1:4)

