



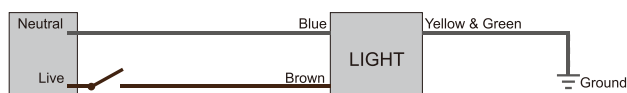
### Technical Parameters

Type	10/20/30/40
Power	10-40W
Input Voltage	AC100-240V
Power Frequency	50/60Hz
CRI	CCT 3000K/4000K=Ra70-79
IP Rating	IP66
Outlook Dimensions	599x219x112mm / 519x219x191mm
Luminaire Net Weight	4,5Kg
System Efficacy	135 ( ±7% ) LM/W ( CCT=4000K )
Power Factor	> 0.95
Lifespan	≥ 100000Hrs ( LM80@25°C )
Working Temperature	-40 ~ +50°C
Working Humidity	15%~90%RH
Storing Temperature	- 35 ~ +70 °C

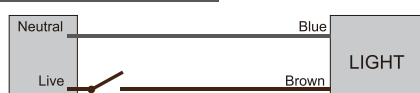
## Warning

1. To avoid damage, falling, electric shock or fire, please do not modify the lamp or replace accessories without confirming with the supplier first.
2. Please authorize only qualified personnel to install the lamp and ensure they follow the instruction manual. Any improper installation might cause falling, electric shock, fire, or other injury, damage or hazard.
3. Please disconnect power before installation or any maintenance of the lamp.
4. Please disconnect power if it begins to smoke or emit odors, since fire or electric shock may occur. Ask qualified person to inspect and maintain the luminaire.
5. Please do not dismantle the lamp without the supplier's authorization.
6. Please do not touch the power supply when the lamp is operating.
7. If the external flexible cable or cord of the luminaire is damaged, it should only be replaced by the supplier, a service agent or qualified person.

#### A. Class I Standard



#### A. Class II Standard



### Wiring:

1. Connect supply wires to luminaire wire leads per the wiring diagram using methods that comply with all applicable codes.
2. Turn power on.

**The luminaire shall only be repaired or maintained by the manufacturer or his service agent or a qualified electrician.**



**Caution, risk of electric shock**



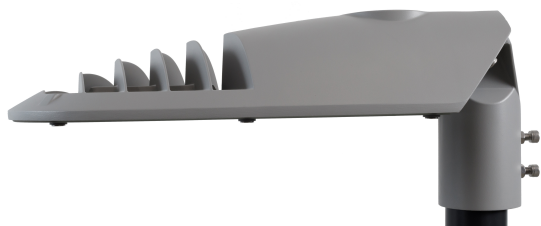
This marking indicates that this product should not be disposed with other household wastes throughout the EU. To prevent possible harm to the environment or human health from uncontrolled waste disposal, recycle it responsibly to promote the sustainable reuse of material resources. To return your used device, please use the return and collect on systems or contact the retailer where the product was purchased. They can take this product for environmental safe recycling.



# Installation Instructions



*Horizontal Installation*



*Vertical Installation*



*Adjustable inclination system*

Armature is equipped with Service Tag: 1 copy inside the luminary. Use copy 2 and 3 inside the pole lid and luminary register.

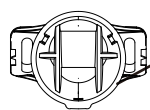
Refer to Service Tag for future Service.



*Service tag with QR code*

## Pole Mount(Adjustable Angle)

Physical Dimensions (Unit: mm)



Φ50MM  
/Φ60MM

