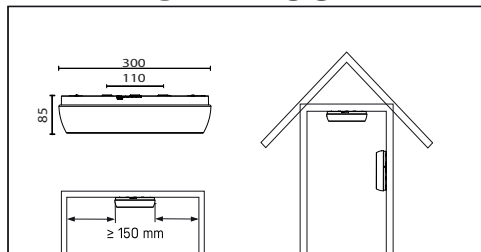
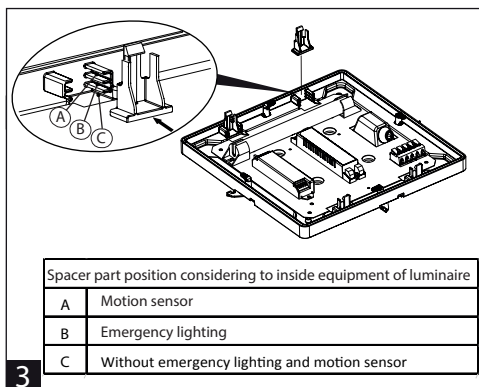
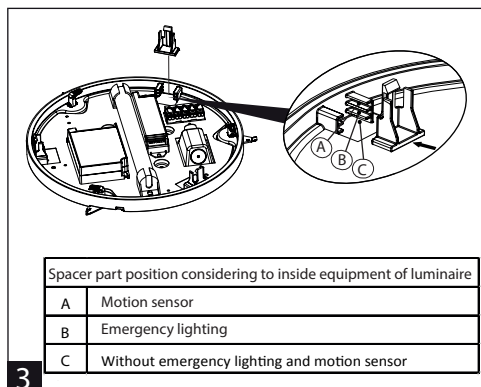
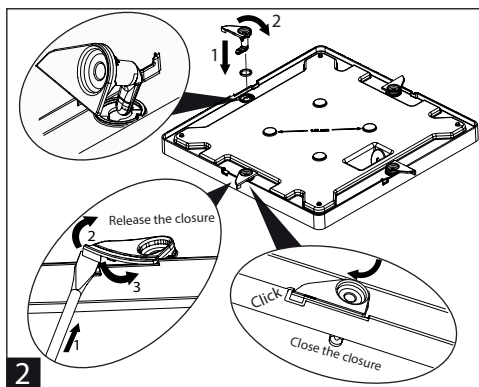
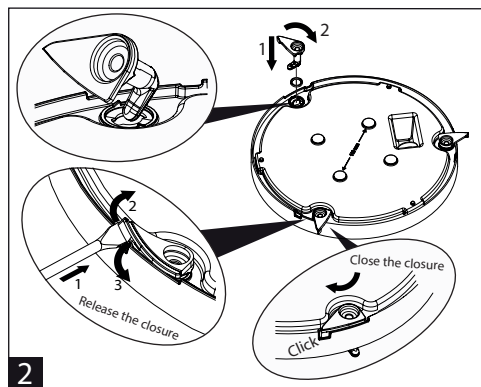
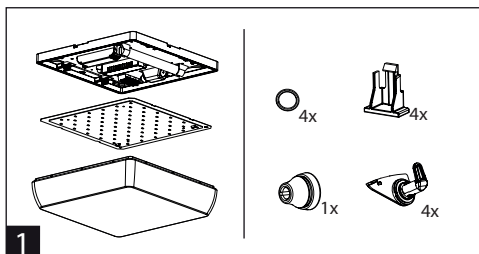
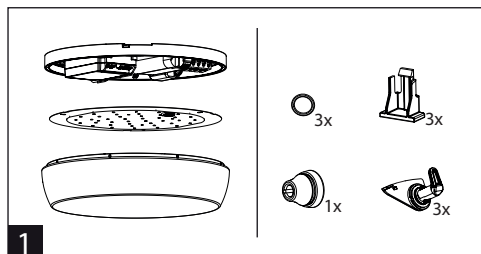
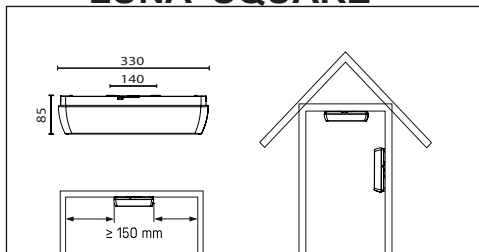


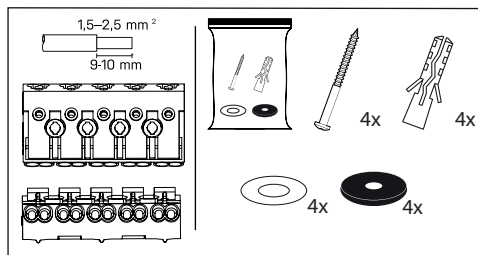
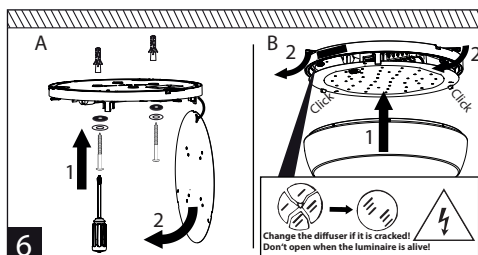
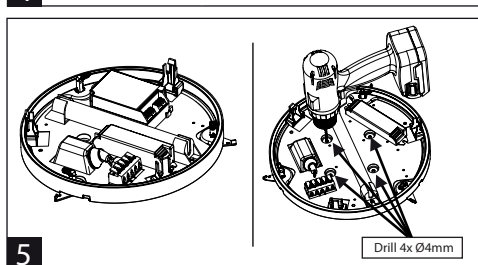
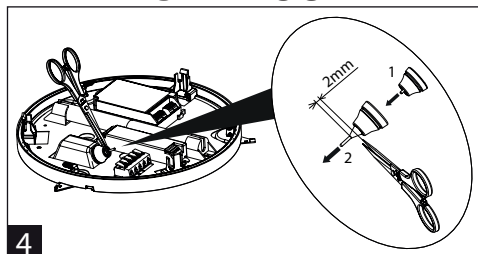
LUNA ROUND



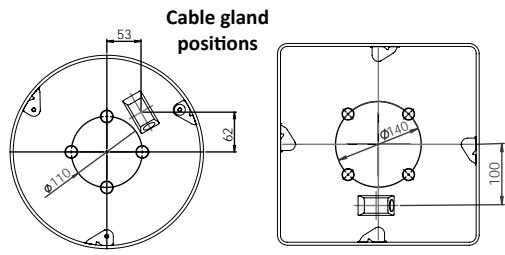
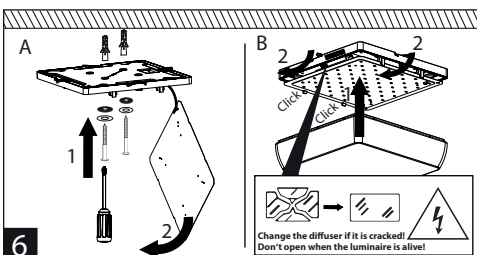
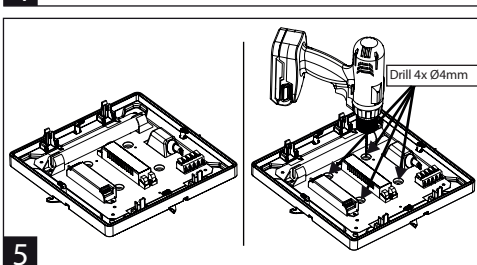
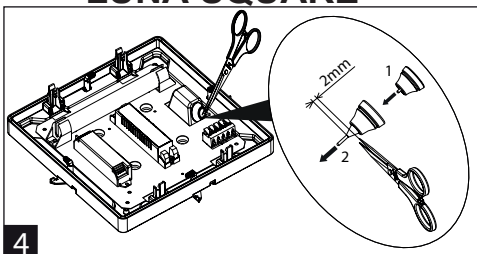
LUNA SQUARE



LUNA ROUND



LUNA SQUARE



Installation can only be carried out by an authorized person and according to the mounting instructions. Any other installation is considered to be improper. For well installation and good luminaire work is necessary ensure a planarity of a mounting surface. Make sure that the luminaire is always disconnected from the power supply before the installation work. Do not use the luminaire if damaged or if damaged the power cable. Only damp microfiber cloth can be used for cleaning. Technical changes are subjected without notice. Do not dispose the luminaire or its parts as household waste, but make the proper recycling.

Table of maximal number of luminaires in one line					10A B	10A C	16A B	16A C
Type	Σ1m	Σ1m	Σ1m	Σ1m	Σ luminaires	Σ luminaires	Σ luminaires	Σ luminaires
Round	1200	1800	2400	3600	32	50	52	85
Square	1200	1800	2400	3600	32	50	52	85



The light source in this luminaire may be replaced only by the manufacturer or its contractual service technician or similarly qualified person!