



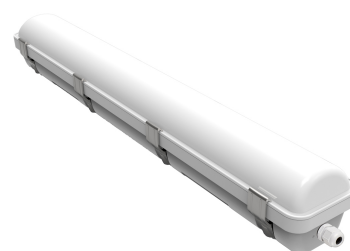
# I D LI 67



<b>Luminous flux</b>	6150lm - 15,000lm
<b>Correlated color temperature</b>	3000K - 6500K
<b>CRI</b>	>80
<b>Light source</b>	Integral LED module
<b>Housing</b>	Polycarbonate
<b>Cover</b>	Polycarbonate
<b>Clips</b>	Stainless steel
<b>Driver</b>	Heavy Duty Industry linear driver
<b>Electrical</b>	Class I, Class II - optional
<b>Input voltage</b>	90-305VAC / 50-60Hz ; 170-305VAC / 50-60Hz
<b>Surge protection</b>	Built in: mains voltage peak up to 4kV
<b>Dimming</b>	DALI (Dali 2), Bluetooth - optional
<b>Cable glands</b>	PG13.5
<b>Wiring</b>	1-phase / 3-phase / single-end, through-wiring
<b>Lifetime</b>	75 000 hours at 35°C
<b>Operating temperature</b>	-25° to 50°C.
<b>Light fitting protection</b>	IP67;IK10

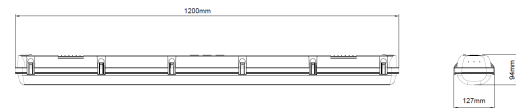
## OPTIONAL FEATURES

- Smart control device
- Motion detection
- Wireless dimming
- Customized holders
- Fast connection - Wieland, Adels
- Outdoor usage kit

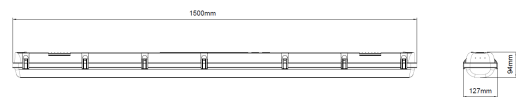


# INDULINE67

Name	Luminous flux netto (lm)	Power (W)	Efficacy (lm/W)	Standard CCT (K)
INDULINE67 M	6150	43	143	4000
INDULINE67 M DALI	6150	43	143	4000
INDULINE67 L	10000	72	138	4000
INDULINE67 L DALI	10000	72	138	4000
INDULINE67 L HO	15000	108	138	4000
INDULINE67 L HO DALI	15000	108	138	4000



INDULINE67 M



INDULINE67 L