

STEEL SPORT



Steel Sport series is a traditional and robust design armature family for various sports facilities.

Innovative connection makes it easy to install and service in the future. For different installation purposes and projects, Steel Sport luminaires have various options of holders to meet the specifics of every type of Arena. Every armature is equipped with mechanical protection net.

Steel Sport is delivered with 4000 kelvin LEDs and DALI driver as a standard. 3000 kelvin and 5000 kelvin LEDs are optional.



STEEL SPORT



Luminous flux	11000*lm/22100*lm
Correlated color temperature	4000K (3000K, 5000K)
Color rendering index	80
Photobiological safety	RG1
Consumption	80*W/160*W
Light source	Integral LED module
Optics Housing	Symmetrical and asymmetrical
Coating Cover	RAL 9010 (pure white), other RAL optional
Electrical Safety	Class I
Input Voltage	220-240 VAC/50-60Hz
Protection class	IP23; IK10
Dimming	DALI as standard
External cable	Optional according to project specification

Installation	Ceiling Can be mounted on normally flammable surfaces.
---------------------	---

Lifetime	L80 70000h (Ta 25°C)
-----------------	----------------------

Ambient temperature	Ta: -10°C to 40°C
----------------------------	-------------------

Standard dimensions	Steel Sport S (85x189x1310) Steel Sport L (87x326x1305)
----------------------------	--

Certificates	ENEC, Ball test, CE, directive 2014/35/EU
---------------------	---

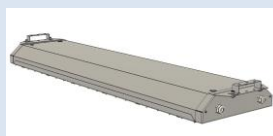
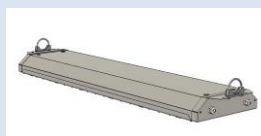
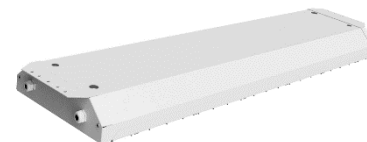


Tolerance +/- 7%

Steel Sport S



Steel Sport L



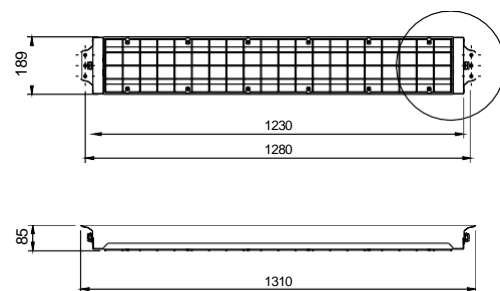
P: +372 55522747 | E: sales@pblic.eu
Manufacturer of Outdoor, Industrial and Commercial Lighting

PBLC
N O R D I C

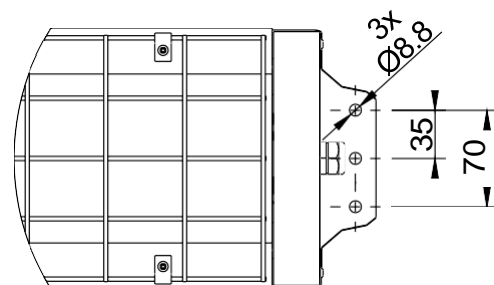
STEEL SPORT

Name	Luminous flux netto (lm)	Power (W)	Efficacy (lm/W)	Standard CCT (K)
STEEL SPORT S	11 000	80	138	4000
STEEL SPORT L	22 100	160	138	4000

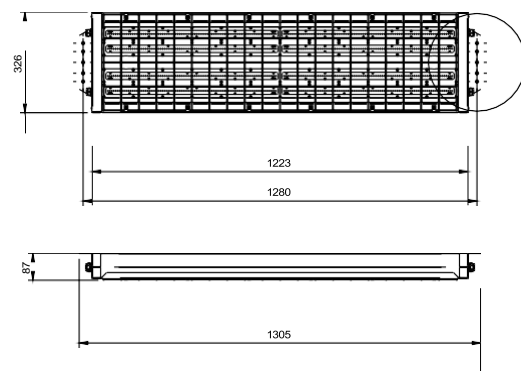
STEEL SPORT S



A (1:4)



STEEL SPORT L



A (1:4)

