

# STEEL SPORT



Steel Sport series is a traditional and robust design armature family for various sports facilities.

Innovative connection makes it easy to install and service in the future. For different installation purposes and projects, Steel Sport luminaires have various options of holders to meet the specifics of every type of Arena. Every armature is equipped with mechanical protection net.

Steel Sport is delivered with 4000 kelvin LEDs and DALI driver as a standard. 3000 kelvin and 5000 kelvin LEDs are optional.



# STEEL SPORT



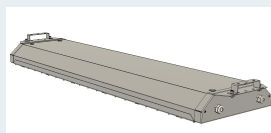
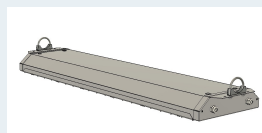
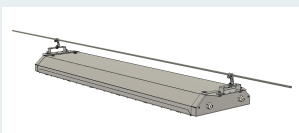
<b>Luminous flux</b>	11 000* - 22 100lm*
<b>Correlated color temperature</b>	4000K (K3000, K5000 and K6000 - optional)
<b>Consumption</b>	80* - 160W*
<b>Light source</b>	Integral LED module
<b>Optics</b>	Symmetrical and asymmetrical options available
<b>Housing</b>	Steel plate
<b>Coating</b>	RAL 9010 (pure white), other RAL - optional
<b>Cover</b>	Ball secure net
<b>Electrical</b>	Class I
<b>Input voltage</b>	230VAC/50 Hz
<b>Protection class</b>	IP20; IK10
<b>Dimming</b>	DALI as standard
<b>External cable</b>	Supplied as optional according to project specification
<b>Installation bracket</b>	Ceiling, Wire, Tube (adjustable angle), Wall (45°angle)
<b>Lifetime</b>	L85 100 000 hours (Ta 25°C)
<b>Operating temperature</b>	-10°C to 50°C
<b>Standard Dimensions</b>	S - 85x189x1310 / L - 87x326x1305
<b>Certificates</b>	CE, Ball Test, ENEC

\* - Tolerance +/- 7%

STEEL SPORT S



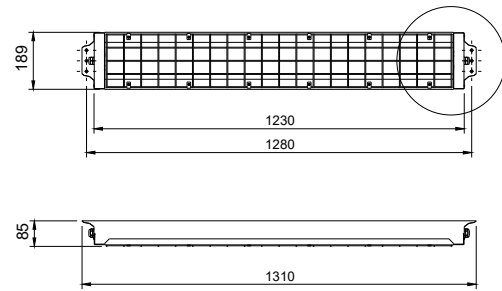
STEEL SPORT L



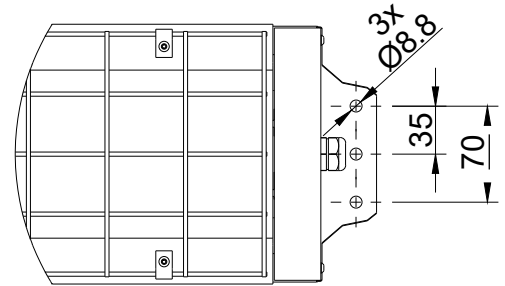
# STEEL SPORT

Name	Luminous flux netto (lm)	Power (W)	Efficacy (lm/W)	Standard CCT (K)
STEEL SPORT S-80	11 000	80	140	4000
STEEL SPORT L-120	16 550	120	140	4000
STEEL SPORT L-145	20 000	145	140	4000
STEEL SPORT L-160	22 100	160	140	4000

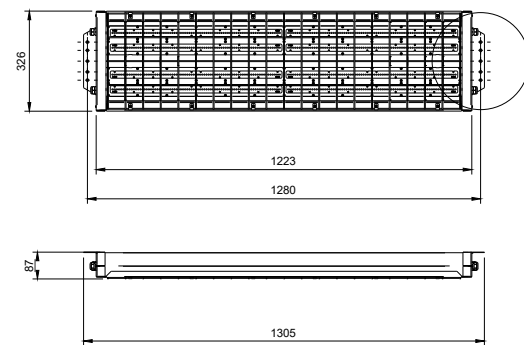
STEEL SPORT S



A (1:4)



STEEL SPORT L



A (1:4)

