



PBLC
N O R D I C

**HIGHLIGHTS
CATALOGUE**



ABOUT US

We are a Northern European developer and manufacturer of professional lighting solutions for private, commercial, and public infrastructures. Our mission is to create high quality, sustainable, efficient, and safe lighting by effectively using the latest technology developments in professional LED lighting.

We started as distributors of professional lighting in Sweden in 2011, providing lighting solutions for high-profile customers in the lighting market of Scandinavia and Europe. Combining our experience with the market requirements for quality, flexibility, and short lead times we operate a full-scale manufacturing unit in the Baltics. We manufacture sustainable lighting socially responsibly.

As a company established in Northern Europe, we are inspired by the Nordic nature and a demanding environment. Our products are designed to endure varying temperatures, conflicting weather and coastal high corrosion environments. We value sustainable solutions in both product and production development, minimizing our ecological footprint and the impact of artificial lighting on nature and humans.

Relying on our extensive experience in the Northern European markets, we specialize in solution-based products developed mainly for Street, Area, Industry, Heavy duty industry, Marine environment, Agriculture and Sports Lighting. Our high-performance products aim to meet the highest quality standards.

MOVO STREET LIGHT SERIES

MOVO series luminaries are a traditional design solution for fulfilling requirements of functional street- and area lighting in public and private infrastructures and in residential areas, including local streets, walking- and bicycle roads, parking lots, industrial areas etc. Long lifetime is assured in every climate zone thanks to high-quality electrical components and effective heat sink. MOVO series offers a reliable way to reduce energy consumption and create a more attractive urban living environment for public and residential areas.



MOVO
STREET LIGHT SERIES

- Traditional design
- Wide range of modifications
- Heat sink design for all climate zones
- Localized anticorrosion levels
- Customized color series
- Easy installation
- Applicable for smart city solutions



GENERAL SPECIFICATION

Luminous flux	2000 lm - 12000 lm
Correlated color temperature	2700 K - 5500 K
Smart connectors	Zhaga, NEMA
Light source	Integrated LED module
Optics	Street, Walking, Bicycle and Area segmentation
Housing	Die-cast aluminium
Coating	RAL 9006 / C3, other RAL and anticorrosion classes (C4, C5) available
Cover	Toughened glass, IK09 (IK08 / IK10 - optional)
Electrical	Class I or Class II
Input voltage	90 - 305VAC / 50 - 60Hz; 170 - 305VAC / 50 - 60Hz
Surge protection	10KV standard, optional versions
Dimming	Dali / 1 - 10V / PWM / Autonomous dimming / Smart control management
External cable	Supplied with 8 - 15 m cable according to modification
Installation bracket diameter	48 - 60 mm
Lifetime	100 000 hours (at Ta 25°C)
Operating temperature	-40°C to 50°C
Light fitting protection	IP66 / IK09
Dimensions	703x243x128mm

Accessories: Wall Holders, Pole Adapters, Photocell, Motion Detection, Smart Control Management

CE  RoHS 



MOVO S STREET LIGHT SERIES

MOVO S series is a highly practical luminary range with lens technology for smaller road and area lighting applications, ranging from pedestrian roads and urban streets to parking lots with maximum demands in terms of quality of light, functionality, design and individual needs. MOVO S integrates the latest available technology of light source, gear and controls as an answer to the demand for energy savings and efficiency.



MOVO S
STREET LIGHT SERIES

- Traditional design
- Wide range of modifications
- Heat sink design for all climate zones
- Localized anticorrosion levels
- Customized color series
- Easy installation
- Applicable for smart city solutions



GENERAL SPECIFICATION

Luminous flux	1400 lm - 6000 lm
Correlated color temperature	2700 K - 5500 K
Smart connectors	Zhaga, NEMA
Light source	Integrated LED module
Optics	Street, Walking, Bicycle and Area segmentation
Housing	Die-cast aluminium
Coating	RAL 9006 / C3, other RAL and anticorrosion classes (C4, C5) available
Cover	Toughened 5mm glass, IK08 (IK09 - optional)
Electrical	Class I or Class II
Input voltage	90 - 305VAC / 50 - 60Hz; 170 - 305VAC / 50 - 60Hz
Surge protection	10KV standard, optional versions
Dimming	Dali / 1 - 10V / PWM / Autonomous dimming / Smart control management
External cable	Supplied with 8 - 15 m cable according to particular modification
Installation bracket diameter	48 - 60 mm
Lifetime	100 000 hours (at Ta 25°C)
Operating temperature	-40°C to 50°C
Light fitting protection	IP66 / IK08 (IK09 - optional)
Dimensions	horizontal / vertical 599x219x112mm / 519x219x191mm

Accessories: Wall Holders, Pole Adapters, Photocell, Motion Detection, Smart Control Management

CE  RoHS 



SOLA STREET LIGHT SERIES

SOLA series luminaries are the mainstream design solution for functional street, road and area lighting. Equipped with high-quality electrical components long lifetime is assured. Tool-free design enables easy, safe and minimal cost maintenance. SOLA series offers a reliable way to reduce energy consumption and create a more attractive urban living environment with visual comfort for public and residential areas.



SOLA
STREET LIGHT SERIES

- Modern design
- Three housing sizes
- Tool-less opening and maintenance
- Wide range of modifications in the same design
- Localized anticorrosion levels
- Customized color series
- Easy installation
- Applicable for smart city solutions



GENERAL SPECIFICATION

Luminous flux	5000 lm - 30000 lm
Correlated color temperature	2700 K - 5500 K
Smart connectors	Zhaga, NEMA
Light source	Integrated LED module
Optics	Street, Highway and Area segmentation
Housing	Die-cast aluminium
Coating	RAL 9006 / C3, other RAL and anticorrosion classes available
Cover	Toughened glass, IK09 (IK08 / IK10 - optional)
Electrical	Class I or Class II
Input voltage	90 - 305VAC / 50 - 60Hz; 170 - 305VAC / 50 - 60Hz
Surge protection	6KV, 10KV and 20KV options
Dimming	Dali / 1 - 10V / PWM / Autonomous dimming / Smart control management
External cable	Supplied with 8 - 18 m cable according to modification
Installation bracket diameter	48 - 60 mm
Lifetime	100 000 hours (at Ta 25°C)
Operating temperature	-40°C to 50°C
Light fitting protection	IP66 / IK09

Accessories: Wall Holders, Pole Adapters, Photocell, Motion Detection

CE RoHS 



VELA FLOODLIGHTS SERIES

VELA FLOODLIGHT series is designed to meet the requirements of a wide range of floodlighting applications for private and public infrastructures. VELA Series provides maximum flexibility and possibilities for almost all the flood light projects with variation of size, power levels, optional equipment and coating levels.



VELA

FLOODLIGHT SERIES

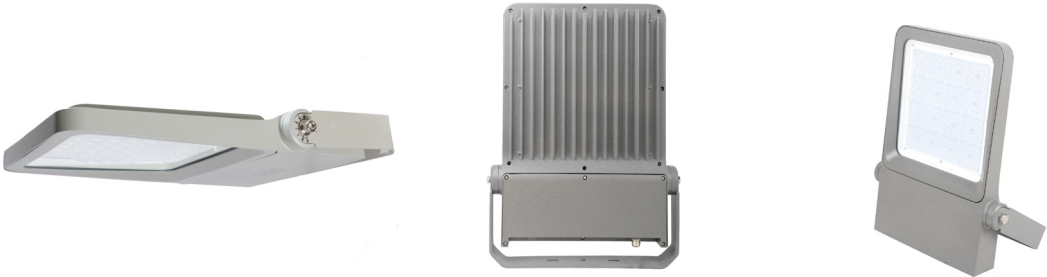
- Modern and slim design
- Wide range of modifications
- Three housing sizes
- Heat sink design for all climate zones
- Localized anticorrosion levels
- Customized color series
- Easy installation
- Applicable for smart management solutions
- External driver cabinet options for easy installation and maintenance



GENERAL SPECIFICATION

Luminous flux	6500 lm - 90000 lm
Correlated color temperature	2700 K - 5500 K
Light source	Integrated LED module
Housing	Die-cast aluminium
Coating	RAL 9006 / C4, other RAL and anti-corrosion classes available
Cover	Tempered glass
Screws	Stainless steel
Smart connectors	Zhaga, NEMA
Optics	Area and Sports standard, other options on request
Anticorrosion class	C4 standard, C3 and C5 optional
Electrical	Class I
Input voltage	90 - 305VAC / 50 - 60Hz; 170 - 305VAC / 50 - 60Hz
Surge protection	6KV, 10KV
Dimming	Dali / 1 - 10V / PWM / Autonomous dimming / Smart control management
Driver placement	Built-in, External Driver cabinet
Lifetime	100 000 hours (at Ta 25°C)
Operating temperature	-40°C to 50°C
Light fitting protection	IP66 / IK08 (IK09, IK10 - optional)

Accessories: Zhaga And Nema Sockets, Motion Detectors, Customized Driver Cabinets



T1000 FLOODLIGHTS SERIES

The high mast T1000 Series floodlighting series provides a complete lighting solution from the simplest Area lighting to the most complex Stadium lighting applications. The high-efficiency floodlights come with three, two or single modules, external and pre-fixed driver boxes for use at a distance or easier low-cost installation. T1000 Series offers new possibilities to reduce energy consumption and increase flexibility with control systems and sensors in facilities with high masts and installation points, instant start and programmable lighting levels.



T1000
FLOODLIGHT SERIES

- Modular design
- Medium and high-power modifications
- Three housing sizes
- Heat sink design for all climate zones
- Localized anticorrosion levels
- External driver cabinet options for safe and professional installation and maintenance



GENERAL SPECIFICATION

Luminous flux	40000 lm - 180000 lm
Correlated color temperature	4000 K - 6000 K
Light source	Integrated LED module
Housing	Die-cast aluminium
Coating	RAL 9006, other RAL available
Cover	Tempered glass
Screws	Stainless steel
Optics	Area and Sports standard, other options on request
Anticorrosion class	C3 standard, C4 and C5M optional
IEC protection class	Class I
Input voltage	90 - 305VAC / 50 - 60Hz; 170 - 305VAC / 50 - 60Hz
Surge protection	10KV standard
Dimming	Dali / 1 - 10V / PWM / Smart control management
Driver placement	External Driver cabinet standard, Built-in (optional)
Lifetime	70 000 hours (at Ta 25°C)
Operating temperature	-40°C to 50°C
Light fitting protection	IP66 / IK08 (IK09, IK10 - optional)

Accessories: Glare Shield, Wireless Steering Options, Motion Detectors, Customized Driver Cabinets, Complete Plug-and-Play





UKKO HIGH BAY SERIES

UKKO HIGH BAY luminaire is designed both for heavy industry demanding environments and regular high bay applications. UKKO HIGH BAY offers variations of modifications for multi-functional applications including traditional industries, logistics and sports as well as heavy duty and high temperature options. UKKO HIGH BAY has various installation options with several light beam and antiglare tools to meet the goals of exact applications. UKKO High Temperature modification is designed for applications with ambient temperature up to 80C°.

UKKO
HIGH BAY SERIES

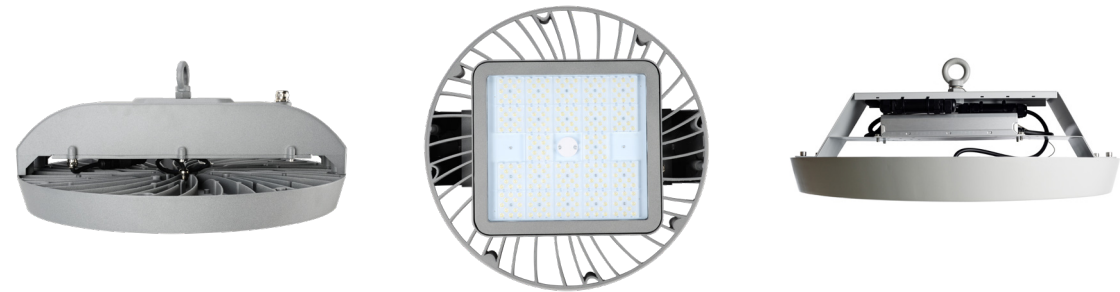
- Effective heat sink in two sizes
- Localized anticorrosion levels
- Customized color options
- Controlled glare options
- External driver options for high temperature applications



GENERAL SPECIFICATION

Luminous flux	13000 lm - 35500 lm
Correlated color temperature	2700 K - 5500 K
Light source	Integrated LED module
Housing	Die-cast aluminium
Coating	RAL 9006 / C3, other RAL and anticorrosion classes available
Installation holders	Steel, Stainless Steel and Aluminium options
Cover	Tempered glass
Optics	Narrow and medium beam with antiglare option
Electrical IEC protection class	Class I
Input voltage	90 - 305VAC / 50 - 60Hz; 170 - 305VAC / 50 - 60Hz
Dimming	Dali / 1 - 10V / PWM
Lifetime	100 000 hours (at Ta 25°C)
Operating temperature	-40°C to 50°C / -40°C to 80°C High temperature modification
Light fitting protection	IP65, IP66 / IK08, IK10

Accessories: vSolid Surface Holder With Adjustable Angle, Antiglare Grid, Wireless Steering, Movement Sensor





STEEL SPORT SERIES

STEEL SPORT series is a traditional and robust design armature family for various sports facilities. Innovative connection makes it easy to install and service in the future. For different installation purposes and projects, STEEL SPORT luminaries have various options of holders to meet the specifics of every type of Arena. Every armature is equipped with mechanical protection net.

STEEL SPORT

INDOOR SPORT SERIES

- Traditional design
- Innovative connection
- Easy service
- Various installation options
- Four housing size versions
- Ball test



GENERAL SPECIFICATION

Luminous flux	11000 lm - 28000 lm
Correlated color temperature	2700 K - 6000 K
Light source	Integrated LED module
Housing	Steel plate
Coating	RAL 9010 (pure white), other RAL - optional
Cover	Ball secure net
Optics	Symmetrical and asymmetrical, low UGR options available
Electrical IEC protection class	Class I
Input voltage	90 - 305VAC / 50 - 60Hz; 170 - 305VAC / 50 - 60Hz
Dimming	Dali as standard
Lifetime	70 000 hours (at Ta 25°C)
Operating temperature	-10°C to 50°C
Light fitting protection	IP20 (IP23 optional) / IK10





ALULINE SERIES

ALULINE SERIES linear luminaries are built for industrial and special applications that require higher than usual heat, chemical and mechanical resistance. ALULINE armatures have an aluminium profile with customized coating and mechanical finish. It has various connection possibilities that fit for both retrofit and newly designed applications. Range of modifications allow ALULINE use in a wide range of applications: heavy duty industry, tunnel, infrastructure, mining, sports and less advanced options for retail and similar applications. ALULINE provides an innovative way to distribute the load across the powerlines.

ALULINE SERIES

Universal application armature
High heat resistance
Fast and easy outside connection
Outside phase switch
Size adjusted to fit in retrofit applications
Advanced installation possibilities



GENERAL SPECIFICATION

Luminous flux	5000 lm - 18000 lm
Correlated color temperature	2700 K – 6500 K
Light source	Integrated LED module
Housing	Aluminium profile
Coating	RAL 9006 / C4, other RAL and anticorrosion classes C3 / C5 available
Cover	Hardened glass / Polycarbonate
Driver	Linear heavy-duty industry
IEC protection class	Class I, Class II - optional
Input voltage	90-305VAC / 50-60Hz ; 170-305VAC / 50-60Hz
Dimming	DALI (Dali 2), Bluetooth - optional
Wiring	1-phase / 3-phase / single-end, through-wiring
Lifetime	70 000 hours (at Ta 35°C)
Operating temperature	-25°C to 50°C
Light fitting protection	IP66 / IK08 (IK10 with PC diffuser)

Areas of application:

Industrial: factories and facilities with heat sensitive environment

Heavy duty industry

Infrastructure: tunnels

Agricultural: farmsteads, silos

Sports facilities: ice sports halls, ball courts

Special applications: car washing facilities and applications with high anticorrosion requirements

Architectural lighting: facade illumination, bridge and other environmental installations





INDULINE 67 SERIES

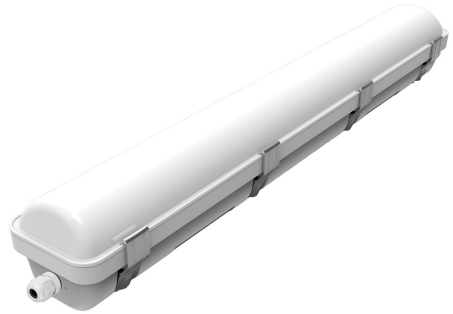
INDULINE 67 is a traditional design plastic luminary for environments with higher than usual demands. The luminary has IP67 ingress protection rating that allows it to be used in facilities with high level of humidity. The luminary is designed with the purpose to minimize installation time. The luminary can be delivered with pre-installed cables and fast connectors for quick installation and easy service in the future.



INDULINE 67

INDUSTRIAL LINEAR SERIES

Traditional design
 High humidity resistance
 Quick installation
 Six housing size options
 For demanding environments
 Highest impact index



GENERAL SPECIFICATION

Luminous flux	6150 lm - 18000 lm
Correlated color temperature	3000 K - 6500 K
Light source	Integrated LED module
Housing	Polycarbonate
Cover	Polycarbonate
Driver	Heavy Duty Industry linear driver
Electrical	Class I, Class II - optional
Input voltage	90-305VAC / 50-60Hz ; 170-305VAC / 50-60Hz
Dimming	DALI (Dali 2), Bluetooth - optional
Wiring	1-phase / 3-phase / single-end, through-wiring
Lifetime	75 000 hours (at Ta 35°C)
Operating temperature	-25°C to 50°C
Light fitting protection	IP67 / IK10

Areas of application:
 Industrial: factories and facilities with heat sensitive environment
 Heavy duty industry
 Infrastructure: tunnels
 Agricultural: farmsteads, silos





STAINLESS PRO SERIES

STAINLESS PRO SERIES is designed for a wide range of heavy duty industrial and infrastructure applications. Three armature sizes in combination with different grades of stainless steel meet the needs of the most demanding applications. To meet the high requirements of the heavy-duty industry STAINLESS PRO has flexible options for connection, highest IP protection level, different options for diffuser material and installation forms. STEEL67 armature family is focused on providing a low glare, safe and comfortable light in a demanding environment.

STAINLESS PRO

HEAVY INDUSTRY SERIES

Easy installation with fast outside connectors
 Exact modifications based on application
 Retrofit size to use with existing wiring
 Flexibility – size, power, finish level, accessories, material used
 Localized anticorrosion levels



GENERAL SPECIFICATION

Luminous flux	3000 lm - 18000 lm
Correlated color temperature	2700 K - 6500 K
Light source	Integrated LED modules
Housing	Stainless steel / various grade
Cover	Tempered glass, Acrylic or PC diffuser
Driver	Integrated, External – optional
Electrical	Class I, Class II - optional
Input voltage	200 - 265VAC / 50 – 60Hz
Dimming	Dali / 1 - 10V / DSI / Switch dim
Wiring	1-phase / 3-phase/ through-wiring
Lifetime	70 000 hours (at Ta 35°C)
Operating temperature	-25°C to 50°C (-40°C with external driver)
Light fitting protection	IP67, IP69 / IK08, IK10

Areas of application:

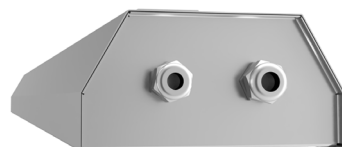
Heavy duty industry: chemically active environments, mining and industries with high anticorrosion requirements

Marine and offshore applications: boats and offshore applications with high anticorrosion requirements

Infrastructure: tunnels

Food industry: food processing facilities

Special applications: car washing facilities, public and private transport structures



CONTACT US

www.PBLC.eu

PBLC NORDIC

E-mail: sales@pblic.eu

Phone: +372 555 22 747

