



**PBLC**  
N O R D I C

2022/2023



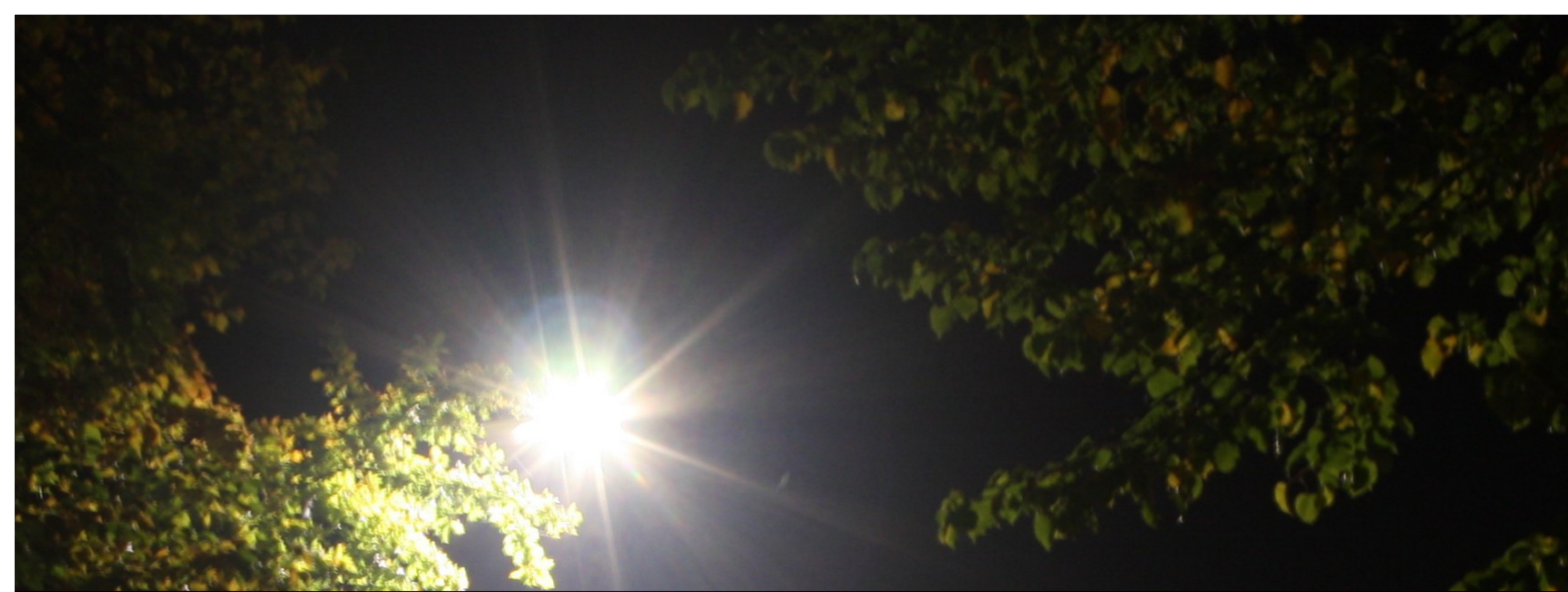
PBLC Nordic is a manufacturer of outdoor, industrial and commercial LED luminaires. We are dedicated to give you the very best of LED lighting solutions with a focus on durability, high quality and energy efficiency.

PBLC Nordic is the lighting branch of the Estonian company Pedrobeat AS established in 1994. Our experience as international distributors of indoor and outdoor lighting since 2013 has led us to manufacturing our own armatures. We set high quality standards to all our products while basing their design and development on our customers needs starting from easy mounting to best energy efficiency.

We are inspired by the nordic nature surrounding us, our products are designed to endure varying temperatures, conflicting weather and costal high corrosion environments while providing different solutions based on individual needs. Our lighting solutions for indoor working environments enhance efficiency and performance.

PBLC Nordic specializes in solution-based products developed for Street-, Area-, Industry-, Heavy industry-, Agriculture-, Marine- and Sports Lighting. Our high-performance products with modern electronic components meet the highest quality standards and the ecological restrictions set by the manufacturing code in EU. PBLC Nordic provides a strong portfolio of environmentally friendly products for outdoor, industrial and commercial use.





## MOTION STREET LIGHT SERIES

**MOTION** series luminaries are a traditional design solution for fulfilling requirements of functional street- and area lighting in public and private infrastructures and in residential areas, including local streets, walking- and bicycle roads, parking lots, industrial areas etc. Long lifetime is assured in every climate zone thanks to high-quality electrical components and effective heat sink.

**MOTION** series offers a reliable way to reduce energy consumption and create a more attractive urban living environment for public and residential areas.



## MOTION STREET LIGHT SERIES

Traditional design  
Wide range of modifications  
Heat sink design for all climate zones  
Localized anticorrosion levels  
Customized color series  
Easy installation  
Applicable for smart city solutions



### GENERAL SPECIFICATION

Luminous flux	2000 lm - 10000 lm
Correlated color temperature	2700 K - 5500 K
Smart connectors	Zhaga, NEMA
Light source	Integral LED module
Optics	Street, Walking, Bicycle and Area segmentation
Housing	Die-cast aluminium
Coating	RAL 9006 / C3, other RAL and anticorrosion classes on request
Cover	Toughened glass, IK09 (IK08 / IK10 - optional)
Electrical	Class I or Class II
Input voltage	90 - 305VAC / 50 - 60Hz; 170 - 305VAC / 50 - 60Hz
Surge protection	10KV standard, optional versions
Dimming	Dali / 1 - 10V / PWM / Autonomous dimming / Smart control management
External cable	Supplied with 8 - 15 m cable according to particular modification
Installation bracket diameter	48 - 60 mm
Lifetime	100 000 hours (at 25°C)
Operating temperature	-40°C to 50°C
Light fitting protection	IP66; IK09
Dimensions	703x243x128mm

Accessories: Wall Holders, Pole Adapters, Pole And Luminary Sets, Project Packing, Photocell, Motion Detection, Smart Control Management







## MOTION STREET LIGHT SERIES

**MOTION** series luminaries are a traditional design solution for fulfilling requirements of functional street- and area lighting in public and private infrastructures and in residential areas, including local streets, walking- and bicycle roads, parking lots, industrial areas etc. Long lifetime is assured in every climate zone thanks to high-quality electrical components and effective heat sink.

**MOTION** series offers a reliable way to reduce energy consumption and create a more attractive urban living environment for public and residential areas.



## MOTION S STREET LIGHT SERIES

Traditional design  
Wide range of modifications  
Heat sink design for all climate zones  
Localized anticorrosion levels  
Customized color series  
Easy installation  
Applicable for smart city solutions



### GENERAL SPECIFICATION

Luminous flux	1400 lm - 5200 lm
Correlated color temperature	2700 K - 5500 K
Smart connectors	Zhaga, NEMA
Light source	Integral LED module
Optics	Street, Walking, Bicycle and Area segmentation
Housing	Die-cast aluminium
Coating	RAL 9006 / C3, other RAL and anticorrosion classes on request
Cover	Toughened 5mm glass, IK08 (IK09 - optional)
Electrical	Class I or Class II
Input voltage	90 - 305VAC / 50 - 60Hz; 170 - 305VAC / 50 - 60Hz
Surge protection	10KV standard, optional versions
Dimming	Dali / 1 - 10V / PWM / Autonomous dimming / Smart control management
External cable	Supplied with 8 - 15 m cable according to particular modification
Installation bracket diameter	48 - 60 mm
Lifetime	100 000 hours (at 25°C)
Operating temperature	-40°C to 50°C
Light fitting protection	IP66; IK09
Dimensions horizontal / vertical	599x219x112mm / 519x219x191mm

Accessories: Wall Holders, Pole Adapters, Pole And Luminary Sets, Project Packing, Photocell, Motion Detection, Smart Control Management







## **SOLA STREET LIGHT SERIES**

**SOLA series luminaries are the mainstream design solution for functional street, road and area lighting. Equipped with high-quality electrical components long lifetime is assured. Tool-free design enables easy, safe and minimal cost maintenance. SOLA series offers a reliable way to reduce energy consumption and create a more attractive urban living environment with visual comfort for public and residential areas.**



## SOLA STREET LIGHT SERIES

Modern design  
Three housing sizes  
Tool-less opening and maintenance  
Wide range of modifications in the same design  
Localized anticorrosion levels  
Customized color series  
Easy installation  
Applicable for smart city solutions



### GENERAL SPECIFICATION

Luminous flux	5000 lm - 30000 lm
Correlated color temperature	2700 K - 5500 K
Smart connectors	Zhaga, NEMA
Light source	Integral LED module
Optics	Street / Highway and Area segmentation
Housing	Die-cast aluminium
Coating	RAL 9006 / C3, other RAL and anticorrosion classes on request
Cover	Toughened glass, IK09 (IK08 / IK10 - optional)
Electrical	Class I or Class II
Input voltage	90 - 305VAC / 50 - 60Hz; 170 - 305VAC / 50 - 60Hz
Surge protection	6KV, 10KV and 20KV options
Dimming	Dali / 1 - 10V / PWM / Autonomous dimming / Smart control management
External cable	Supplied with 8 - 18 m cable according to particular modification
Installation bracket diameter	48 - 60 mm
Lifetime	100 000 hours (at 25°C)
Operating temperature	-40°C to 50°C
Light fitting protection	IP66; IK09

Accessories: Wall Holders, Pole Adapters, Pole And Luminary Sets, Project Packing, Photocell, Motion Detection





## VELA FLOODLIGHTS SERIES

VELA FLOODLIGHT series is designed to meet the requirements of a wide range of floodlighting applications for private and public infrastructures.

VELA Series provides maximum flexibility and possibilities for almost all the flood light projects with variation of size, power levels, optional equipment and coating levels.





## VELA FLOODLIGHTS SERIES

Modern and slim design  
 Wide range of modifications  
 Three housing sizes  
 Heat sink design for all climate zones  
 Localized anticorrosion levels  
 Customized color series  
 Easy installation  
 Applicable for smart management solutions  
 External driver cabinet options for easy installation and maintenance



### GENERAL SPECIFICATION

Luminous flux	6500 lm - 78000 lm
Correlated color temperature	2700 K - 5500 K
Light source	Integral LED module
Housing	Die-cast aluminium
Cover	Tempered glass
Screws	Stainless steel
Smart connectors	Zhaga, NEMA
Optics	Area and Sports standard, other options on request
Coating	RAL 9006, other RAL on request
Anticorrosion class	C4 standard, C3 and C5M optional
Electrical	Class I
Input voltage	90 - 305VAC / 50 - 60Hz; 170 - 305VAC / 50 - 60Hz
Surge protection	6KV, 10KV
Dimming	Dali / 1 - 10V / PWM / Autonomous dimming / Smart control management
Driver placement	Built-in and External Driver cabinet
Lifetime	100 000 hours (at 25°C)
Operating temperature	-40°C to 50°C
Light fitting protection	IP66; IK08 (IK09, IK10 - optional)

Accessories: Zhaga And Nema Sockets, Motion Detectors, Customized Driver Cabinets





## F180 FLOODLIGHTS SERIES

The high mast F180 Series floodlighting series provides a complete lighting solution from the simplest Area lighting to the most complex Stadium lighting applications. The high-efficiency floodlights come with three, two or single modules, external and pre-fixed driver boxes for use at a distance or easier low-cost installation. F180 Series offers new possibilities to reduce energy consumption and increase flexibility with control systems and sensors in facilities with high masts and installation points, instant start and programmable lighting levels.



# F180

## FLOODLIGHTS SERIES

- Modular design
- Medium and high-power modifications
- Three housing sizes
- Heat sink design for all climate zones
- Localized anticorrosion levels
- Customized color options
- External driver cabinet options for safe and professional installation and maintenance



### GENERAL SPECIFICATION

Luminous flux	40000 lm - 160000 lm
Correlated color temperature	4000 K - 6000 K
Light source	Integral LED module
Housing	Die-cast aluminium
Cover	Tempered glass
Screws	Stainless steel
Optics	Area and Sports standard, other options on request
Coating	RAL 9006, other RAL on request
Anticorrosion class	C4 standard, C3 and C5M optional
IEC protection class	Class I
Input voltage	90 - 305VAC / 50 - 60Hz; 170 - 305VAC / 50 - 60Hz
Surge protection	10KV standard
Dimming	Dali / 1 - 10V / PWM / Smart control management
Driver placement	External Driver cabinet as standard, Built-in (optional)
Lifetime	70 000 hours (at 25°C)
Operating temperature	-40°C to 50°C
Light fitting protection	IP66; IK08 (IK09, IK10 - optional)

Accessories: Glare Shield, Wireless Steering Options, Motion Detectors, Customized Driver Cabinets, Complete Plug-and-play solutions, including masts







## **UKKO HIGH BAY SERIES**

**UKKO HIGH BAY led luminaire is designed both for heavy industry demanding environments and regular high bay applications. Ukko High Bay offers variations of modifications for multifunctional applications including traditional industries, logistics and sports as well as heavy duty and high temperature options. Ukko High Bay has various installation options with several light beam and antiglare tools to meet the goals of exact applications. Ukko High Temperature modification is designed for applications with ambient temperature up to 80C°.**



## UKKO

### HIGH BAY SERIES

Attractive design

Effective heat sink in two sizes

Localized anticorrosion levels

Customized color options

External driver options for high temperature applications

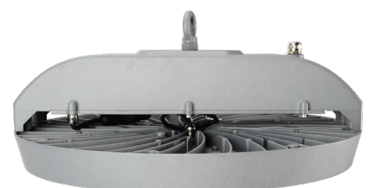
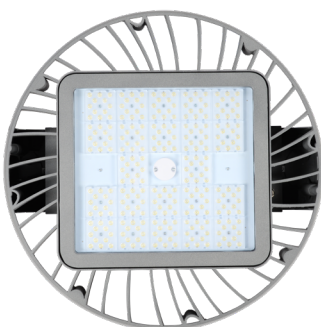
Controlled glare options



#### GENERAL SPECIFICATION

Luminous flux	13000 lm - 35500 lm
Correlated color temperature	2700 K - 5500 K
Light source	Integral LED module
Housing	Die-cast aluminium
Installation holders	Steel, Stainless Steel and Aluminium options
Cover	Tempered glass
Optics	Narrow and medium beam with antiglare option
Electrical IEC protection class	Class I
Input voltage	90 - 305VAC / 50 - 60Hz; 170 - 305VAC / 50 - 60Hz
Dimming	Dali / 1 - 10V / PWM
Lifetime	100 000 hours (at 25°C)
Operating temperature	-40°C to 50°C, -40 to +80°C High-temp modification
Light fitting protection	IP65 / IP66; IK08 / IK10

Accessories: Solid Surface Holder, Solid Surface Holder With Adjustable Angle, Antiglare Grid, Wireless Steering, Movement Sensor







## STEEL SPORT SERIES

**STEEL SPORT series is a traditional and robust design armature family for various sports facilities.**

**Innovative connection makes it easy to install and service in the future. For different installation purposes and projects, STEEL SPORT luminaries have various options of holders to meet the specifics of every type of Arena. Every armature is equipped with mechanical protection net.**

## STEEL SPORT SERIES

Traditional design  
Innovative connection  
Easy service  
Various installation options  
Equipped with protection net



### GENERAL SPECIFICATION

Luminous flux	11000 lm - 22000 lm
Correlated color temperature	2700 K - 6000 K
Light source	Integral LED module
Housing	Steel plate
Coating	RAL 9010 (pure white), other RAL - optional
Cover	Ball secure net
Optics	Symmetrical and asymmetrical options available
Electrical IEC protection class	Class I
Input voltage	90 - 305VAC / 50 - 60Hz; 170 - 305VAC / 50 - 60Hz
Dimming	Dali as standard
Lifetime	70 000 hours (at 25°C)
Operating temperature	-10°C to 50°C
Light fitting protection	IP20; IK10








## ALULINE SERIES

**ALULINE SERIES LED linear luminaires** are built for industrial and special applications that require higher than usual heat, chemical and mechanical resistance. ALULINE armatures have an aluminium profile with customized coating and mechanical finish. It has various connection possibilities that fit for both retrofit and newly designed applications. Range of modifications allow ALULINE use in a wide range of applications: heavy duty industry, tunnel, infrastructure, mining, sports and less advanced options for retail and similar applications. ALULINE provides an innovative way to distribute the load across the power lines.





## ALULINE SERIES

Universal application armature  
 High heat resistance  
 Fast and easy outside connection  
 Outside phase switch  
 Size adjusted to fit in retrofit applications  
 Advanced installation possibilities



### GENERAL SPECIFICATION

Luminous flux	5000 lm - 15000 lm
Correlated color temperature	2700K - 6500K
Light source	Integrated LED module
Housing	Aluminium profile
Cover	Hardened glass/ Polycarbonate
Driver	Linear heavy duty industry
IEC protection class	Class I, Class II - optional
Input voltage	90-305VAC / 50-60Hz ; 170-305VAC / 50-60Hz
Dimming	DALI (Dali 2), Bluetooth - optional
Wiring	1-phase / 3-phase / single-end, through-wiring
Lifetime	70 000 hours (at 35°C)
Operating temperature	-40°C to 40°C
Light fitting protection	IP66;IK08 (IK10 with PC diffuser)

Areas of application:

Industrial: factories and facilities with heat sensitive environment

Heavy duty industry

Infrastructure: tunnels

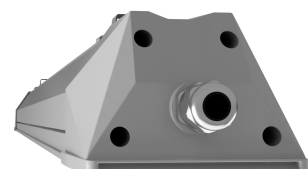
Agricultural: farmsteads, silos

Sports facilities: ice sports halls, ball courts

Special applications: car washing facilities and applications with high anticorrosion requirements

Architectural lighting: facade illumination, bridge and other environmental installations

Entertainment lighting: advertisement lighting







## LED67 SERIES

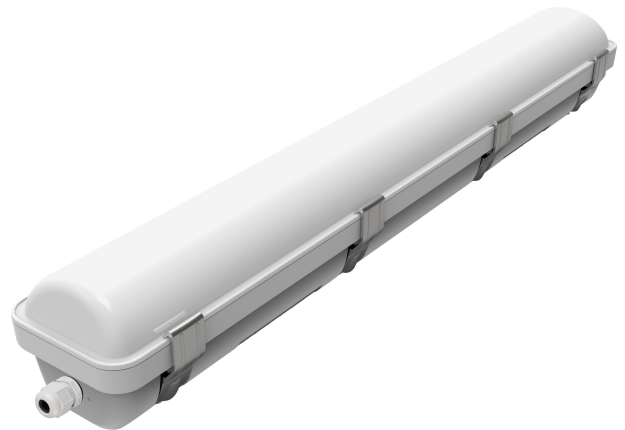
LED67 is a traditional design plastic luminary for environments with higher than usual demands. The luminary has IP67 ingress protection rating that allows it to be used in facilities with high level of humidity.

LED67 is equipped with a breathing valve to ensure protection of internal components against ambient temperature fluctuation effect. The luminary is designed with the purpose to minimize installation time.

The luminary can even be delivered with pre-installed cables and fast connectors for quick installation and easy service in the future.

## LED67 SERIES

Traditional design  
High humidity resistance  
Quick installation  
For high-demanding environments  
Highest impact index



### GENERAL SPECIFICATION

Luminous flux	6150 lm - 15000 lm
Correlated color temperature	3000K - 6500K
Light source	Integrated LED module
Housing	Polycarbonate
Cover	Polycarbonate
Driver	Heavy Duty Industry linear driver
Electrical	Class I, Class II - optional
Input voltage	90-305VAC / 50-60Hz ; 170-305VAC / 50-60Hz
Dimming	DALI (Dali 2), Bluetooth - optional
Wiring	1-phase / 3-phase / single-end, through-wiring
Lifetime	75 000 hours (at 35°C)
Operating temperature	-25°C to 50°C
Light fitting protection	IP67;IK10

Areas of application:

Industrial: factories and facilities with heat sensitive environment

Heavy duty industry

Infrastructure: tunnels

Agricultural: farmsteads, silos

Special applications: car washing facilities and applications with high anticorrosion requirements







## **STEEL67 SERIES**

**STEEL67LED SERIES** is designed for a wide range of industrial, sports and infrastructure applications. Four armature size options in combination with different grades of steel meet the needs of the most demanding applications. To meet the high requirements of the heavy-duty industry STEEL67 has flexible options for connection, IP protection levels, light diffusers and installation forms. STEEL67 armature family is focused on providing a low glare, safe and comfortable light in demanding environment.



## STEEL67 SERIES

Easy installation with fast outside connectors  
Exact application based on modifications  
Retrofit size to use with existing wiring  
Flexibility – size, power, finish level, accessories, material used



### GENERAL SPECIFICATION

Luminous flux	5000 lm - 25000 lm
Correlated color temperature	2700 K - 6500 K
Light source	Integrated LED modules
Housing	Stainless steel/ various grade
Cover	Tempered glass, Acrylic or PC diffuser
Driver	Integrated, External - optional
IEC protection class	Class I, Class II - optional
Input voltage	200 - 265VAC / 50 - 60Hz
Dimming	Dali / 1 - 10V / DSI / Switch dim
Wiring	1-phase / 3-phase/ through-wiring
Lifetime	70 000 hours (at 35C)
Operating temperature	-25°C to 50°C
Light fitting protection	IP67;IK08, IK10, IP69K

### Areas of applications:

Heavy duty industry: chemically active environments, mining and industries with high anticorrosion requirements

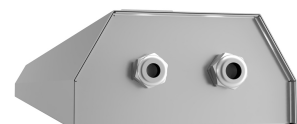
Marine and offshore applications: boats and offshore applications with high anticorrosion requirements

Infrastructure: tunnels

Food industry: food processing facilities

Sports facilities: ice sports halls, tennis courts, handball and indoor football facilities, basketball courts, school sports halls

Special applications: car washing facilities, public and private transport structures





## CONTACT US

### Head office:

Pedrobeat AS / PBLC Nordic  
Harku 27  
11612 Tallinn, Estonia  
Company ID: 10262422  
Vat no: EE100189449  
Phone: +372 6563701  
Mobile: +372 5552 2747  
E-mail: sales@pblic.eu

### Offices:

#### Estonia

Rauno Toommägi  
Phone: +372 5812 5900  
E-mail: rauno@pblic.eu

#### Sweden Stockholm

Andris Berkis  
Phone: +46 72221 7778  
E-mail: andris.berkis@pblic.eu

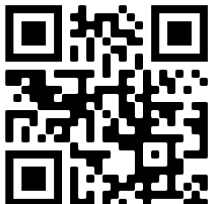
#### Sweden Norrköping

Sven-Ola Lundgren  
Phone: + 46 70555 4573  
E-mail: sven-ola.lundgren@pblic.eu

#### Latvia

Raivis Skvireckis  
Phone: + 371 2916 4845  
E-mail: raivis@pblic.eu





**CONTACT US:**

**Pedrobeat AS / PBLC NORDIC**

**E-mail: [sales@pblc.eu](mailto:sales@pblc.eu)**

**Phone: +372 555 22 747**